

# Powder Dispenser PD250

## Precise and repeatable dosing of Powder Reagents



The PD250 is designed for easy and controlled dosage of DPD powder reagents. One click gives the exact amount of reagent required for a 10 ml sample. The PD 250 is the perfect alternative to the Powder Packs for those carrying out a number of tests, saving time while also reducing the amount of packaging waste.

The reagent is supplied in sealed glass cuvettes, sufficient for up to 250 tests. The protective sealing enables a shelf life of up to 5 years although, once the cuvette has been opened, the contents should be used within 6 months. The cuvettes can be changed quickly and easily. Furthermore, the dispenser can be thoroughly cleaned and the ergonomic design allows for comfort during operation.

62

### Highlights

- Determination of chlorine according to ISO 7393-2:2000 (free + total)
- 250 tests
- 5 years reagent shelf life (unopened cuvette)
- Easy handling
- Precise dosage

### Refill Packs

Article	Order code
VARIO Chlorine <b>Free</b> 10 ml 2 reagent cuvettes	4530140
VARIO Chlorine <b>Total</b> 10 ml 2 reagent cuvettes	4530150
VARIO Chlorine <b>Free + Total</b> 10 ml one reagent cuvette each	4530 60

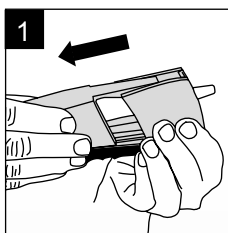
### Delivery Content

PD 250 in carton  
including 1 reagent cuvette and instruction manual.

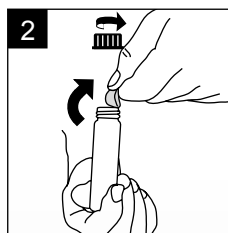
Article	Order code
PD 250 Set 1 - <b>Free Chlorine</b> Content: 1 powder dispenser "Free Chlorine" 1 reagent cuvette "Free Chlorine" 1 instruction manual 1 protective sleeve (rubber)	4194900
PD 250 Set 2 - <b>Total Chlorine</b> Content: 1 powder dispenser "Total Chlorine" 1 reagent cuvette "Total Chlorine" 1 instruction manual 1 protective sleeve (rubber)	4194910



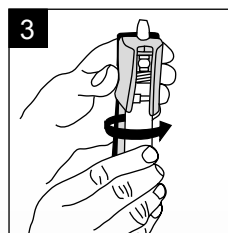
### Easy Handling



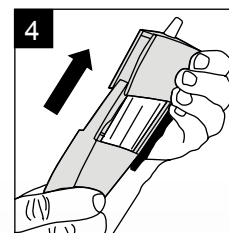
1 Remove the dispenser cover.



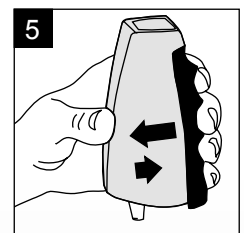
2 Uncap the reagent cuvette and remove the seal. Use material within 6 months of removing the seal.



3 Hold the dispenser with the tip upright and screw the cuvette on to the dispenser.



4 Slide the cover into the grooves until the lower end snaps into place.



5 To use: Hold with the tip down and press the blue handle towards the dispenser body. Release quickly. Releasing the handle quickly helps prevent powder build up.